



CANBERRA GIRLS
GRAMMAR SCHOOL

YEAR 10 GEOGRAPHY: UNIT: WELLBEING

USING ARCGIS STORY MAP CASCADE

Lynne McInnes

Lynne.McInnes@cggg.act.edu.au

TECHNOLOGY: TRYING SOMETHING NEW

ArcGIS Story Map

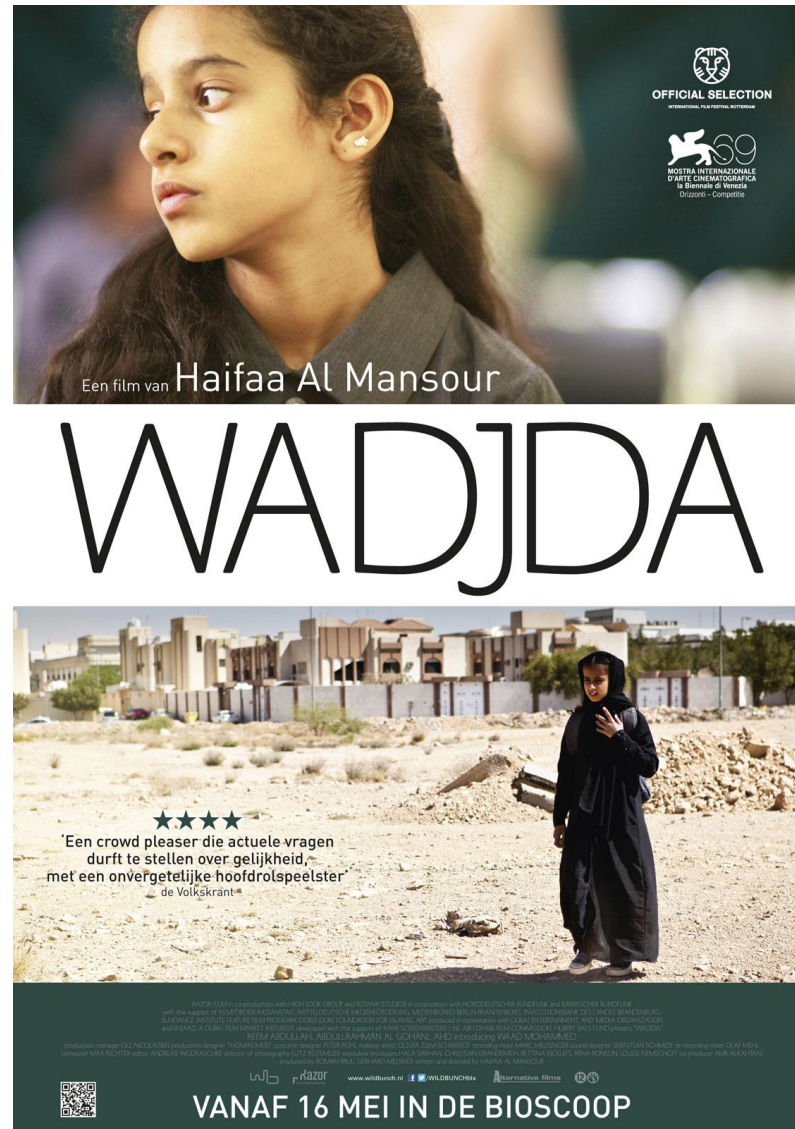
- ▶ The students enjoy the challenge - they will soon learn it, even if it takes you twice as long!
- ▶ It involves all those essentials: collaborative learning, creativity, critical literacy (in many formats); decision-making; technological competencies.
- ▶ It connects to the real world in a way that students relate to - most young people do their “learning” via media such as films and various social media platforms.
- ▶ The product can be shared to a select group or to the world on-line. This encourages authenticity and high standards.
- ▶ The students become critical citizens - they question what exists and ask “how could it be improved”.

THE TASK

- ▶ In groups of 3- 4 watch a movie
- ▶ Take note of aspects of *wellbeing* depicted in the movie
- ▶ Each person decides on one issue or aspect of wellbeing to research
- ▶ Research the country of focus and the aspect of wellbeing
- ▶ Find evidence of the level of wellbeing in the country, with respect to the aspect studied
- ▶ Evaluate how accurately the movie depicted this aspect of wellbeing, providing evidence to justify your comments.

Movies

- ▶ Trash (2014)
- ▶ The Rocket (2103)
- ▶ Moolaade (2004)
- ▶ The Lady (2011)
- ▶ Wadjda (2012)
- ▶ Bekas (2012)
- ▶ Not One Less (1999)
- ▶ Precious (2009)
- ▶ The Rocket (2013)
- ▶ Samson and Delilah (2009)
- ▶ Tsotsi (2005)
- ▶ Trash (2014)
- ▶ Yesterday (2004)



PRESENTATION

- ▶ Each group will have one lesson to provide a seminar on their country
- ▶ Each person provides a speech on their aspect of wellbeing and presents an ArcGIS Story Map, made with the app “Cascade” which addresses this topic and evaluates the movie (8-10 minutes per person)
 - ▶ The Story Map should be complete in itself and not rely on any other Story Map (size is not limited, but you may have to select highlights to present)
 - ▶ The Story Maps content should be in a narrative style
 - ▶ Interactive maps from ESRI or elsewhere should be included
 - ▶ Maps, graphs, images, clips from the movie should also be included
 - ▶ A Reference List must be included on the Story Map
- ▶ As part of the seminar each group should prepare a handout AND deliver an activity for learning and engagement

STUDENT WORK

▶ ***The Lady*** Myanmar

▶ Kyrene <http://arcg.is/81Sqm>

▶ Grace <http://arcg.is/2j1tUqz>

▶ Madeleine <http://arcg.is/2gYPStC>

▶ Ariel <https://arcg.is/1CGDbH>

▶

▶

▶ ***Siddharth*** India

▶ Shriya: <http://arcg.is/2wfBm2s>

▶ Sarah: <https://www.arcgis.com/apps/Cascade/index.html?appid=ee22a90fbf914d9bbe0cc6417bcb606e>

▶ Katherine: <https://arcg.is/0Ceine>

▶ Kate: <https://arcg.is/1PXOfq>

▶

STORY MAP CASCADE

- ▶ Use this app to create your story map, but first, check out what you are aiming for
- ▶ Look at the Gallery at <https://storymaps.arcgis.com/en/>
 - ▶ “The Two Koreas”
 - ▶ <https://storymaps.esri.com/stories/2017/two-koreas/>
 - ▶ “Celebrating Women’s Rights”
 - ▶ <http://urbanobservatory.maps.arcgis.com/apps/Cascade/index.html?appid=dcaf1c22437e45b3acea2bdaf1999521>
 - ▶ Or “Investing in Infrastructure”
 - ▶ <https://kitchenergis.maps.arcgis.com/apps/Cascade/index.html?appid=a5865a5981d74bcc92aa1cd360b6813c>

Downloading the App

1. Click on Apps in the menu bar at the top
2. Scroll down to *A Rich Multimedia Narrative* and find *Story Map Cascade*
3. Click on *Build*

Or find *Cascade Builder* at

<http://www.arcgis.com/apps/Cascade/>



Story Map CascadeSM

Create a visually and editorially engaging full-screen scrolling experience for your audience blending narrative text, maps, 3D scenes, images, videos, etc. Sections containing text and in-line media can be interspersed with "immersive" sections that fill the screen, including map animations and transition effects.

BUILD

OVERVIEW

GALLERY

TUTORIAL

FAQS

TIPS

Getting started with Story Map Cascade

1. Open an account, or if you have a Google account, sign in with that:

ArcGIS - Sign In

Secure | <https://www.arcgis.com/home/signin.html?returnUrl=https%3A%2F%2Fwww.arcgis.com%2Fapps%2FMyStories%2Farctgis-storymaps-my-stories-t>

ArcGIS Features Plans Gallery Map Scene Help

Sign In

Need an ArcGIS Public Account?

An ArcGIS Public Account is a personal account with limited usage and capabilities and is meant for non-commercial use only.

[CREATE A PUBLIC ACCOUNT](#)

If you have signed up for an **Esri Account**, you have automatically been given access to an ArcGIS Public Account and you can use the same sign-in credentials for both.

Sign In esri

Username

Password

Keep me signed in

[SIGN IN](#)

[Forgot password?](#) [Forgot username?](#)

OR

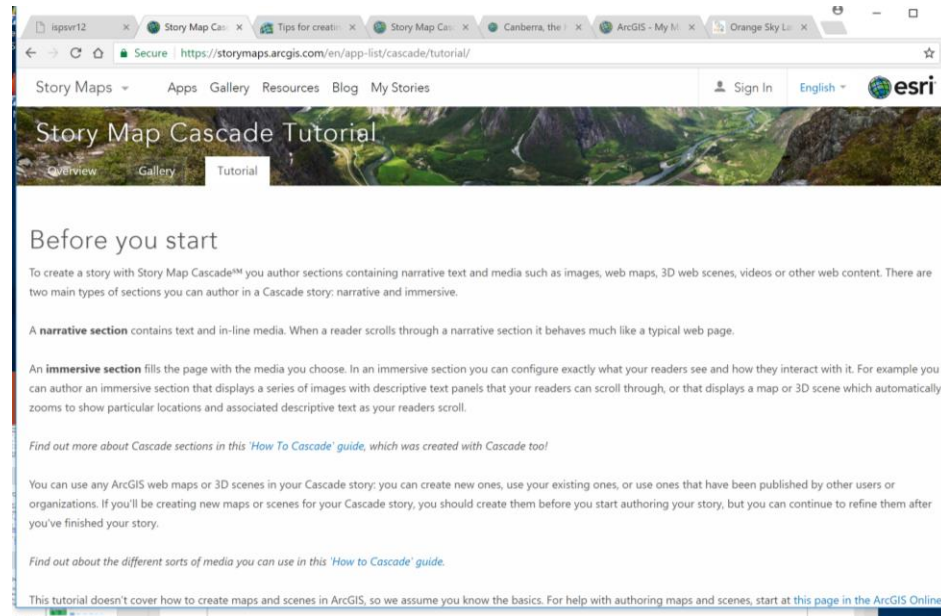
Sign in with [ENTERPRISE ACCOUNT](#)

Sign in with

A Tutorial to guide you

A step by step guide is available on the storymaps site:

<https://storymaps.arcgis.com/en/app-list/cascade/tutorial/>



HELP

- ▶ ArcGIS has many tutorials and blogs with hints

<https://blogs.esri.com/esri/arcgis/2017/02/10/how-to-cascade/>

- ▶ To find maps to upload, go to the ArcGIS home page and click *maps*

<https://www.arcgis.com/home/index.html>